

HIRETECH HT7-2 DISC FLOOR SANDER PARTS LIST

Ref	PSTK	Description	Pack Qty	Notes
001	010010	Screw	4	
002	011600	Switch 220/240 Volt (Bias Off)	1	
002	011610	Switch 110/120 Volt (Bias Off)	1	
004	010050	Cover Motor	1	
005	010070	Housing Motor	1	
006	010080	Strain Relief	1	
007	010090	Cable Main Assembly 220/240 Volt (UK)	1	
007	010100	Cable Main 110 Volt (NA)	1	
007	010110	Cable Main Assembly 220 Volt (EEC)	1	
007	010120	Cable Main Assembly 240 Volt (AUS)	1	
007	010130	Cable Main Assembly 110 Volt (UK)	1	
008	010140	Handles Pack of 2	2	
009	010150	Screw Handle	4	
010	010160	Cable Switch Assembly	1	
011	010170	Brush Block Assembly	1	
012	010180	Brush Motor	4	Do not allow any one motor brush to wear below a minimum length of 12mm (1/2in). Always replace motor brushes as a set of 4
013	010190	Screw	4	
014	010200	Washer	4	
015	010210	Screw	4	
016	010220	Screw and Washer Set	4	Washer not required when fitting Ref: 55 PSTK: 010630 Retainer
017	010230	Brush Spring	4	Replace brush springs every two (2) sets of motor brushes, always replace as a set of 4.
018	010240	Field 110/120 Volt HT7	1	
018	010250	Field 220/240 Volt HT7	1	
019	010260	Washer Clamp	2	
020	010270	Washer Lock	5	
021	010280	Screw	2	
022	010290	Baffle	1	
023	010300	Screw	3	
024	010310	Ring Bearing	1	Discontinued after serial number 1901 (240/220 Volt), 1089 (110/120 Volt)
024	010600	Spring Load	1	
025	010320	Bearing	2	
026	010330	Armature 110/120 Volt	1	Fitted with bearing PSTK: 010320. Kit contains PSTK: 010420 x 1, PSTK: 000350 x 2, PSTK: 010320 x 1
026	010340	Armature 220/240 Volt	1	Fitted with bearing PSTK: 010320. Kit contains PSTK: 010420 x 1, PSTK: 000350 x 2, PSTK: 010320 x 1
027	010350	Key	3	
028	010360	Fan Motor	1	
029	010370	Gasket	1	
030	010380	Plate Exhaust	1	
031	010390	Fan Intake	1	
032	010400	Ring Retainer	1	
033	010410	Spacer Bearing	1	
034	010420	Seal	1	
035	010430	Ring Retainer	1	
036	010440	Pinion	1	

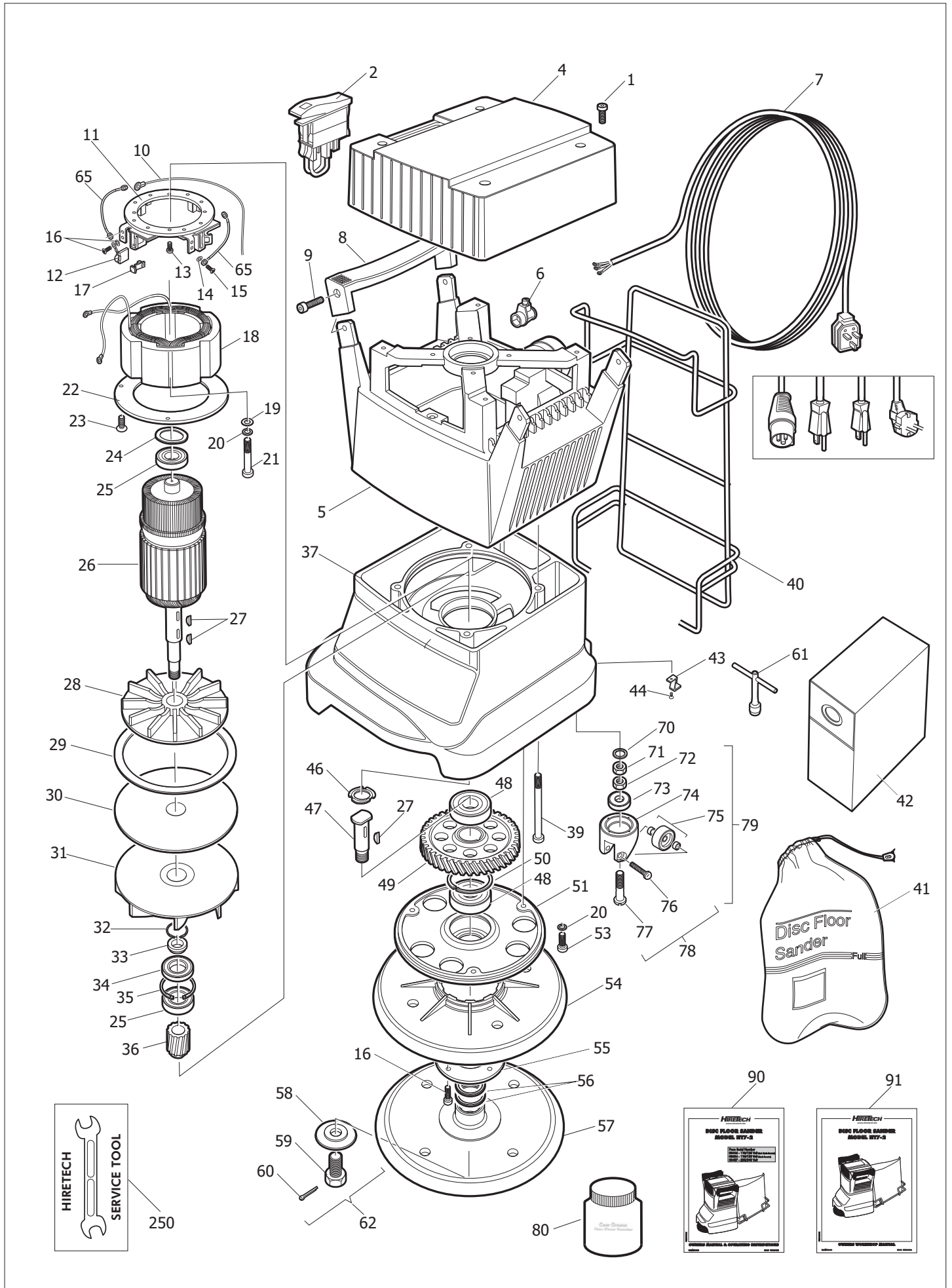
HIRETECH HT7-2 DISC FLOOR SANDER PARTS LIST

Ref	PSTK	Description	Pack Qty	Notes
037	010450	Housing Gear	1	
039	010470	Screw	4	
040	010480	Frame Bag Support	1	
041	010490	Bag Dust Cloth	1	
042	07038	Disposable Paper Dust Bag HT7/HTF Pack 2 (box 25)	25	
042	07040	Disposable Paper Dust Bag HT7/HTF (box 50)	50	
043	010510	Clip Wrench	2	
044	010520	Screw	2	
046	010540	Spring Load	1	
047	010550	Shaft Drive	1	
048	010560	Bearing	2	
049	010570	Gear Drive	1	
050	010580	Ring Retaining	1	
051	010590	Cover Gear	1	
053	010610	Screw	3	
054	010620	Guard Disc	1	
055	010630	Retainer	1	
056	010640	Shim	3	
057	012310	Sanding Pad HT7	1	
058	010660	Washer Clamp	1	
059	010670	Bolt Clamp	1	
060	010680	Pin Cotter	1	
061	010690	Wrench	1	
062	010720	Washer, Clamp and Pin Cotter Kit	1	
065	010750	Brush Shunt	2	
069	011680	Owners Manual & Operating Instructions	1	Download from http://www.hiretech.biz/downloads/owners-manuals
070	011170	Washer Lock	2	
071	011160	Nut Castor	2	
072	011440	Lock Nut Castor	2	
073	011070	Bearing Swivel	2	Use centre punch to peen four spots around top inside edge of housing to lock bearing in place
074	011080	Housing Castor	1	Includes PSTK: 011070 Bearing Swivel
075	011090	Wheel Castor	2	Includes bearings and spacers
076	011120	Screw Wheel	2	Always use thread lock when fitting/replacing screw
077	011150	Screw Swivel	2	Always reset castors and check sanding pad contact area when servicing castors. See Owners Manual & Operating Instructions
078	011155	Service Kit Castor	1	Includes 2 x Screw Swivel, 2 x 011170 Washer Lock, 2 x 011160 Nut Castor, 2 x Lock Nut Castor, 2 x 011070 Bearing Swivel. Note: Always reset castors and check sanding pad contact area when servicing castors. See Owners Manual & Operating Instructions.
079	010530	Castor Assembly	2	

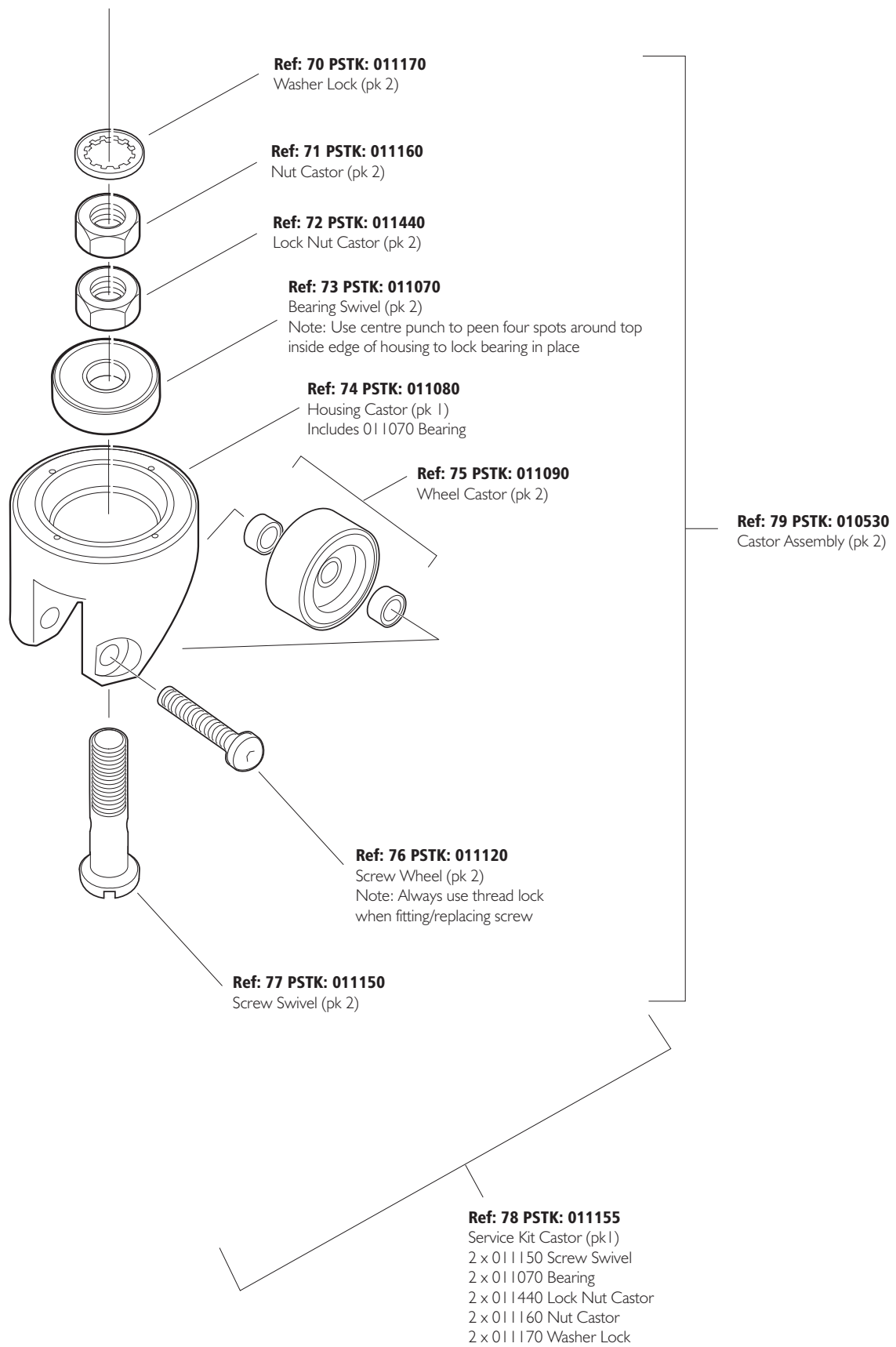
HIRETECH HT7-2 DISC FLOOR SANDER PARTS LIST

Ref	PSTK	Description	Pack Qty	Notes
080	011270	Grease Gear Disc Floor Sander	1	CAUTION: Wear protective gloves and eye/face shield. Store out of children's reach. Clean all components thoroughly, use complete contents of container for one HT7 gearbox. Spread grease evenly around gear and pinion.
250	010760	Carton	1	
250	011720	Service Tool - Castor Adjuster	1	
250	011731	Service Tool - Sanding Pad Fitting/Removal	1	
250	011740	Service Tool - Pinion & Pulley Fitting/Removal	1	
250	011850	Service Tool - Extractor Gear Cover	1	
250	011860	Service Tool - Extractor Seal	2	

HIRETECH HT7-2 DISC FLOOR SANDER PARTS DRAWING



HIRETECH HT7-2 DISC FLOOR SANDER CASTOR ASSEMBLY



Note: Always reset castors and check sanding pad contact area when servicing castors. See Owners Manual & Operating Instructions